



The Enterprise Imaging Company

PicomEnterprise™
Version 3.3

DICOM Conformance Statement

ScImage, Inc.
4916 El Camino Real
Los Altos, California
94022

Date: June 25, 2014

Version: 1.0

Document Number: CS-dcm-3.3b720140625

Table of Contents

1	Introduction.....	5
1.1	Scope and field of application.....	5
1.2	Intended audience	5
1.3	Contents and structure.....	5
1.4	Used definitions, terms and abbreviations	5
1.5	References.....	5
1.6	Important note to the reader	6
1.6.1	Interoperability.....	6
1.6.2	Validation.....	6
1.6.3	New versions of the DICOM Standard.....	6
1.7	General Acronyms and abbreviations	7
2	Implementation model	8
2.1	Application data flow diagram.....	8
2.2	Functional definition of Application Entities	12
2.3	Sequencing of Real World Activities	12
3	AE Specifications.....	13
3.1	Storage AE Network Specification.....	13
3.1.1	Association Establishment Policies	16
3.1.1.1	General.....	16
3.1.1.2	Asynchronous Nature	16
3.1.1.3	Implementation Identifying Information	16
3.1.2	Association Initiation Policy.....	16
3.1.2.1	Send Images from PicomEnterprise	16
3.1.2.1.1	Associated Real World Activity	16
3.1.2.1.2	Proposed Presentation Contexts.....	17
3.1.2.1.3	C-STORE SCU Conformance	17
3.1.2.2	Verification Application Level Communication	18
3.1.2.2.1	Associated Real World Activity	18
3.1.2.2.2	Presentation Context Table	18
3.1.2.2.3	C-ECHO SCP Conformance.....	19
3.1.2.2.4	Presentation Context Acceptance Criterion	19
3.1.2.2.5	Transfer Syntax Selection Policies	19
3.1.2.3	Store Images in the PicomEnterprise Database.....	19
3.1.2.3.1	Associated Real World Activity	19
3.1.2.3.2	Presentation Context Table	19
3.1.2.3.3	C-STORE SCP Conformance	19
3.1.2.3.4	Presentation Context Acceptance Criterion	20
3.1.2.3.5	Transfer Syntax Selection Policies	20
3.1.2.4	Send Modality Worklist Information from PicomEnterprise Database ..	20
3.1.2.4.1	Associated Real World Activity	20
3.1.2.4.2	Presentation Context Table	20
3.1.2.4.3	C-FIND SCP Conformance	20
3.1.2.4.4	Presentation Context Acceptance Criterion	22
3.1.2.4.5	Transfer Syntax Selection Policies	22
3.1.2.5	Query/Retrieve from PicomEnterprise Database	23

3.1.2.5.1	Associated Real World Activity	23
3.1.2.5.2	Presentation Context Table	23
3.1.2.5.3	C-FIND SCP Conformance	24
3.1.2.5.4	C-MOVE SCP Conformance	24
3.1.2.5.5	Presentation Context Acceptance Criterion	24
3.1.2.5.6	Transfer Syntax Selection Policies	24
3.1.2.5.7	Implementation Remarks	24
3.1.2.5.7.1	Patient Root Query/Retrieve Information Model	24
3.1.2.5.7.2	Study Root Query/Retrieve Information Model	25
3.1.2.5.7.3	Basic Text SR and Enhanced SR C-FIND Supported Attributes	26
3.1.2.5.7.4	Grayscale Soft Copy Presentation State C-FIND Supported Attributes	26
3.1.2.6	Response to Storage Commitment Request	27
3.1.2.6.1	Associated Real World Activity	27
3.1.2.6.2	Presentation Context Table	27
3.1.2.6.3	SOP Specific Conformance for Storage Commitment Push SOP Class	27
3.1.2.6.4	Presentation Context Acceptance Criterion	27
3.1.2.6.5	Transfer Syntax Selection Policies	27
3.1.2.7	Send Storage Commitment Request to a Remote System	27
3.1.2.7.1	Associated Real World Activity	27
3.1.2.7.2	Presentation Context Table	28
3.1.2.7.3	SOP Specific Conformance for Storage Commitment Push SOP Class	28
3.1.2.7.4	Presentation Context Acceptance Criterion	28
3.1.2.7.5	Transfer Syntax Selection Policies	28
3.1.2.8	Send Basic Study Content Notification to a Remote System	28
3.1.2.8.1	Associated Real World Activity	28
3.1.2.8.2	Proposed Presentation Contexts	28
3.1.2.8.3	SOP Specific Conformance	29
3.1.2.8.4	Presentation Context Acceptance Criterion	29
3.1.2.8.5	Transfer Syntax Selection Policies	29
3.1.2.9	Print Images	29
3.1.2.9.1	Associated Real World Activity	29
3.1.2.9.2	Proposed Presentation Contexts	29
3.1.2.9.3	Conformance to the Print SOP Classes	29
3.1.3	Association Acceptance Policy	31
3.2	Performed Procedure Step Manager Specification	31
3.2.1	Association Establishment Policies	31
3.2.1.1	General	31
3.2.1.2	Number of Associations	31
3.2.1.3	Asynchronous Nature	32
3.2.1.4	Implementation Identifying Information	32
3.2.2	Association Initiation Policy	32
3.2.2.1.1	Forwarding MPPS Messages	32
3.2.2.1.2	Associated Real-World Activity	32

3.2.2.1.3	Proposed Presentation Contexts.....	32
3.2.3	Association Acceptance Policy.....	33
3.2.3.1	Respond to a Verification Request from a Remote System	33
3.2.3.1.1	Associated Real-World Activity	33
3.2.3.1.2	Presentation Context Table	33
3.2.3.1.3	SOP Specific Conformance for Verification SOP Class	33
3.2.3.2	Receiving MPPS Messages	33
3.2.3.2.1	Associated Real-World Activity	33
3.2.3.2.2	Presentation Context Table	34
3.2.3.2.3	SOP Specific Conformance Statement for MPPS	34
3.2.3.2.4	Presentation Context Acceptance Criterion	34
3.2.3.2.5	Transfer Syntax Selection Policies	34
3.3	Media Storage AE Specification.....	34
3.3.1	File Meta Information	34
3.3.2	Media Related Real World Activities	34
3.3.2.1	RWA Display Directory	34
3.3.2.1.1	Application Profile(s) for this RWA.....	35
3.3.2.1.2	Required and Optional DICOMDIR Keys.....	35
3.3.2.2	RWA Write Images to DICOM Storage Media	35
3.3.2.2.1	Application Profile(s) for this RWA.....	35
3.3.2.2.2	RWA Write Images to DICOM Storage media	35
3.3.2.3	RWA Read Images from DICOM Storage media	36
3.3.2.3.1	Application Profile(s) for this RWA.....	36
3.3.2.3.2	Support for attributes in images.....	36
3.3.3	Augmented Application Profile	36
4	Communication Profiles	37
4.1	Supported Communication Stacks.....	37
4.2	TCP/IP Stack.....	37
4.2.1	Physical Media Support	37
5	Extensions/Specializations/Privatizations.....	38
6	Configuration	39
6.1	AE Title/Presentation Address mapping.....	39
6.1.1	Local AE Titles and Presentation Addresses	39
6.1.2	Remote AE Titles and Presentation Addresses.....	39
6.2	Configurable parameters.....	39
6.2.1	Configurable per PicomEnterprise system.....	39
6.2.2	Configuration per remote system.....	39
6.2.3	Print Configuration	40
7	Support of Extended Character Sets	41
7.1	Basic Film Session SOP Class.....	41
7.2	Basic Film Box SOP	41
7.3	Basic Grayscale Image Box SOP class.....	42
7.4	Color Grayscale Image Box SOP Class.....	42

1 Introduction

This document will specify the PicomEnterprise system's conformance to the DICOM 3.0 standard. The PicomEnterprise system provides a mechanism for image and non-image data management and archival services. This document will cover the conformance for the following:

Receive DICOM Storage SOP Instances from an acquisition modality for long-term data storage.

Service and Initiate Storage Commitment requests for the SOP Instances.

Send DICOM Storage SOP Instances to an external system for data distribution.

Service and Initiate information query and data retrieval to the Patient, Study, Series, and SOP Instances maintained in another DICOM entity and load them into the PicomEnterprise system.

Receive a DICOM Modality Worklist information query of the ordered studies from an acquisition modality

The PicomEnterprise creates a number of DICOM Application Entities to support these services. Each DICOM AE will be dedicated to a particular type of the DICOM services, as explained in the rest of the document.

1.1 *Scope and field of application*

The scope of this DICOM Conformance Statement is to facilitate data exchange with equipment of ScImage, Inc. This document specifies the compliance of the DICOM standard. It contains a short description of the applications involved and provides technical information about the data exchange capabilities of the equipment. The main elements describing these capabilities are: the supported DICOM Service Object Pair (SOP) Classes, Roles, Information Object Definition (IOD) and Transfer Syntaxes.

1.2 *Intended audience*

This Conformance Statement is intended for:

- (Potential) customers,
- System integrators of medical equipment,
- Marketing staff interested in the system functionality,
- Software designers implementing DICOM interfaces.
- It is assumed that the reader is familiar with the DICOM standard.

1.3 *Contents and structure*

The DICOM Conformance Statement is contained in chapters 2 through 7 and follows the contents and structuring requirements of DICOM PS 3.2-2011.

1.4 *Used definitions, terms and abbreviations*

DICOM definitions, terms and abbreviations are used throughout this Conformance Statement. For a description of these, see NEMA PS 3.3-2011 and PS3.4-2011.

1.5 *References*

[DICOM] Digital Imaging and Communications in Medicine (DICOM) standard, NEMA PS 3.X

1.6 *Important note to the reader*

This Conformance Statement by itself does not guarantee successful interoperability of ScImage equipment with non-ScImage equipment. The user (or user's agent) should be aware of the following issues:

1.6.1 Interoperability

Interoperability refers to the ability of the application functions, distributed over two or more systems, to work successfully together. The integration of medical devices into a networked environment may require application functions that are not specified within the scope of DICOM. Consequently, using only the information provided in this Conformance Statement does not guarantee interoperability of ScImage equipment with non-ScImage equipment. It is the user's responsibility to analyze thoroughly the application requirements and to specify a solution that integrates ScImage equipment with non-ScImage equipment.

1.6.2 Validation

ScImage equipment has been carefully tested to assure that the actual implementation of the DICOM interface corresponds with the Conformance Statement. Where ScImage equipment is linked with non-ScImage equipment, the first step is to compare the relevant Conformance Statements. If the Conformance Statements indicate that successful information exchange should be possible, additional validation tests will be necessary to ensure functionality, performance, accuracy and stability of image and image related data. It is the responsibility of the user (or user's agent) to specify the appropriate test suite and to carry out the additional validation tests.

1.6.3 New versions of the DICOM Standard

The DICOM Standard will evolve in the future to meet the user's growing requirements and to incorporate new features and technologies. ScImage is actively involved in this evolution and plans to adapt its equipment to future versions of the DICOM Standard. In order to do so, ScImage reserves the right to make changes to its product or to discontinue its delivery. The user should ensure that any non-ScImage provider linking to ScImage equipment, also adapt to future versions of the DICOM standard. If not, the incorporation of DICOM enhancements into ScImage equipment may lead to loss of connectivity (in case of networking) and the incompatibility (in case of media).

1.7 General Acronyms and abbreviations

ACC	American College of Cardiology
AE	Application Entity
ACR	American College of Radiology
ANSI	American National Standard Institute
BOT	Basic Offset Table
CD-R	CD Recordable
CD-M	CD Medical
DCI	Digital Cardio Imaging
DCR	Digital Cardio Review
DIMSE	DICOM Message Service Element
DIMSE-C	DICOM Message Service Element-Composite
DIMSE-N	DICOM Message Service Element-Normalized
ELE	Explicit VR Little Endian
EBE	Explicit VR Big Endian
FSC	File Set Creator
GUI	Graphical User Interface
HIS	Hospital Information System
HL7	Health Level 7
ILE	Implicit VR Little Endian
IOD	DICOM Information Object Definition
ISIS	Information System – Imaging System
NEMA	National Electrical Manufacturers Association
PDU	Protocol Data Unit
RIS	Radiology Information System
RWA	Real World Activity
SC	Secondary Capture
SCM	Secondary Capture Management
SCP	Service Class Provider
SCU	Service Class User
SOP	Service Object Pair
TCP/IP	Transmission Control Protocol/Internet Protocol
UID	Unique Identifier
WLM	Worklist Management

2 Implementation model

The PicomEnterprise system of ScImage, Inc. is a medical image and information management system designed to provide seamless integration into a healthcare enterprise. The PicomEnterprise provides the following DICOM data exchange features:

- It receives images sent to it by remote applications (e.g. imaging modalities or workstations) and stores them in a networked database.
- It allows the operator to send images from the database to remote applications.
- It sends storage commitment requests to remote applications.
- It allows the operator to print images stored in the database on a DICOM printer.
- It is able to read and write DICOM storage media.
- It responds to Worklist queries (patient and study information) by remote applications with Worklist information obtained from an internal database.
- It responds to queries sent by a remote application, retrieves the information queried (if present) and moves it back to the requesting remote application.
- It responds to storage commitment requests from remote applications.
- It responds and is able to process and forward MPPS requests.

PicomEnterprise allows the operator also to view, to analyze and process the images stored in the database. Some advanced analysis and processing applications are primarily designed for images generated by certain imaging modalities and that are sent to the PicomEnterprise system by means of a private protocol that are beyond the scope of current DICOM standard. Some of these advanced applications may not perform optimally when applied to images that are sent to the PicomEnterprise system by means of DICOM because additional required data may be lacking.

2.1 *Application data flow diagram*

The PicomEnterprise system provides image and non-image data management and archival services. The PicomEnterprise system consists of multiple independent Application Entities. Its related Implementation model is shown in Figure 2-1.

The PicomEnterprise operator can request to send images from PicomEnterprise to a selected remote system, retrieve images from remote systems and can request to print images. This results in Associations initiated by the appropriate AE of the PicomEnterprise system.

PicomEnterprise is able to reply on verification requests, to store received images onto PicomEnterprise and retrieve requested images from PicomEnterprise. These requests from remote systems are done via Associations initiated by the remote systems.

PicomEnterprise is able to display the contents (i.e. directory listing) of DICOM storage media and to write, read and update images on/from a DICOM storage media.

PicomEnterprise is able to respond to Worklist queries and retrieves the requested Worklist information (patient and study information) from the PicomEnterprise database. These requests from remote systems are done via associations initiated by the remote systems.

PicomEnterprise is able to send and respond to storage commitment requests, to commit the storage of received images onto PicomEnterprise. It then responds with a result of the storage commitment procedure. The request for storage commitment is done via associations initiated by the remote systems.

PicomEnterprise is able to respond to query and retrieve (information objects) requests. PicomEnterprise verifies the presence of the requested object in its database, and if present retrieves it and moves it to the requesting remote application. These requests from the remote systems are done via associations initiated by the remote systems.

PicomEnterprise is also able to receive and forward a DICOM Modality Performed Procedure Step SOP Class N-CREATE request and create a MPPS object within the PicomEnterprise system. Additionally, PicomEnterprise is able to receive and forward one or more DICOM Modality Performed Procedure Step SOP Class N-SET requests and update the requested MPPS object within the PicomEnterprise system.

Figure 2-1: PicomEnterprise Implementation Model

The circles to the left represent the Local Real World Activities

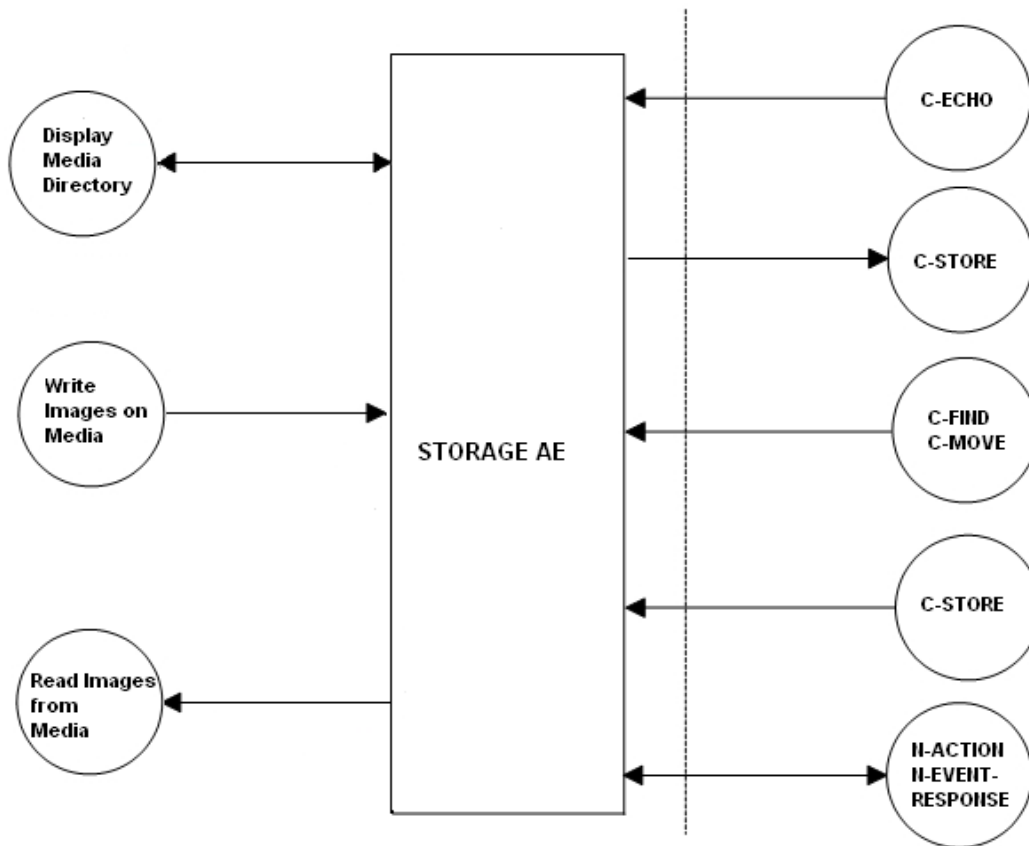


Figure 2-1.1: PicomEnterprise Storage AE Implementation Model

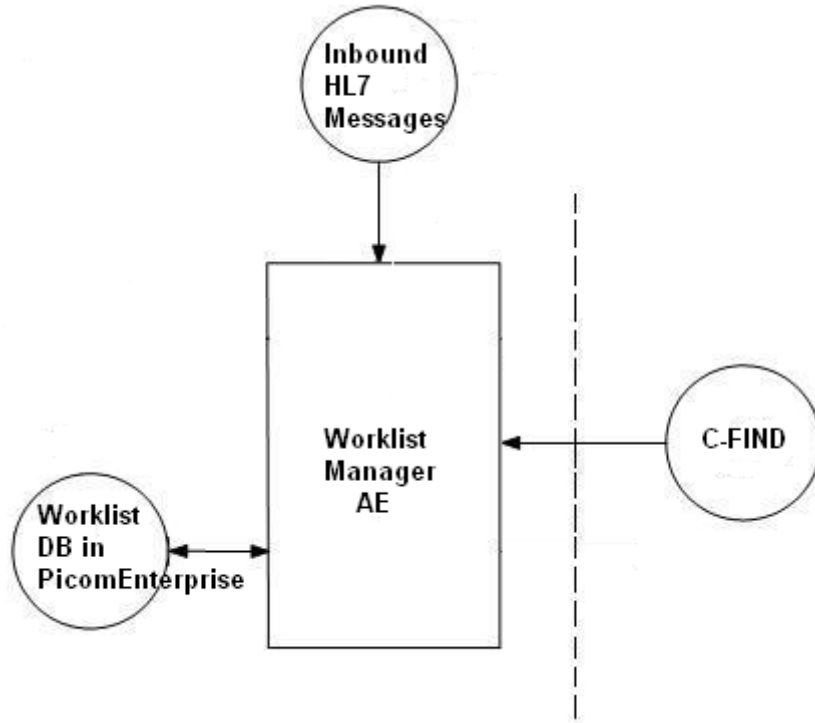


Figure 2-1.2: PicomEnterprise Worklist Manager AE Implementation Model

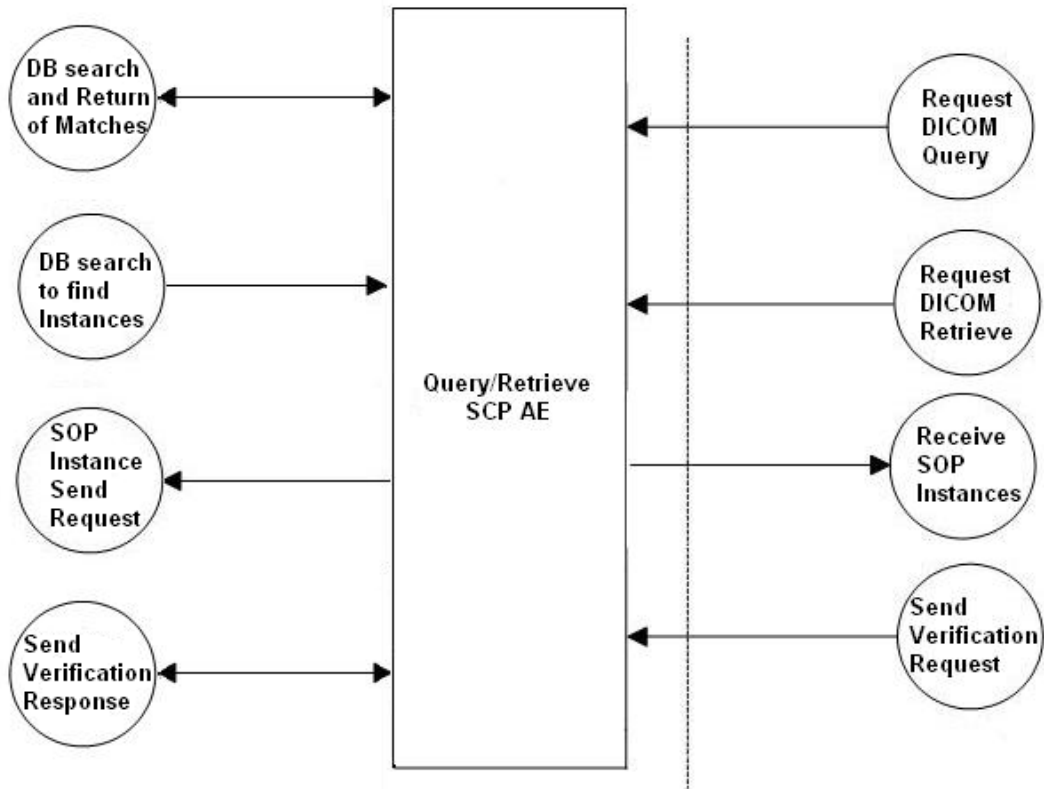


Figure 2-1.3: PicomEnterprise Query/Retrieve Implementation Model

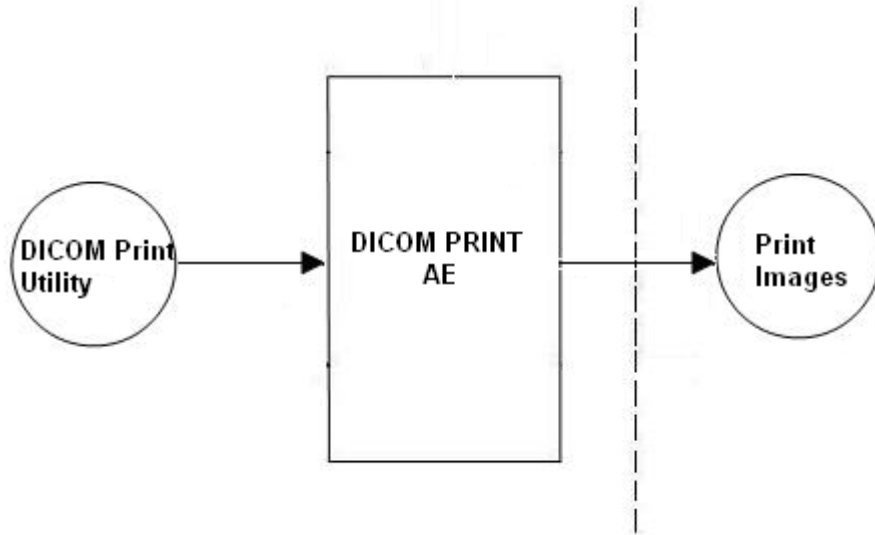


Figure 2-1.4: PicomEnterprise DICOM PRINT AE Implementation Model

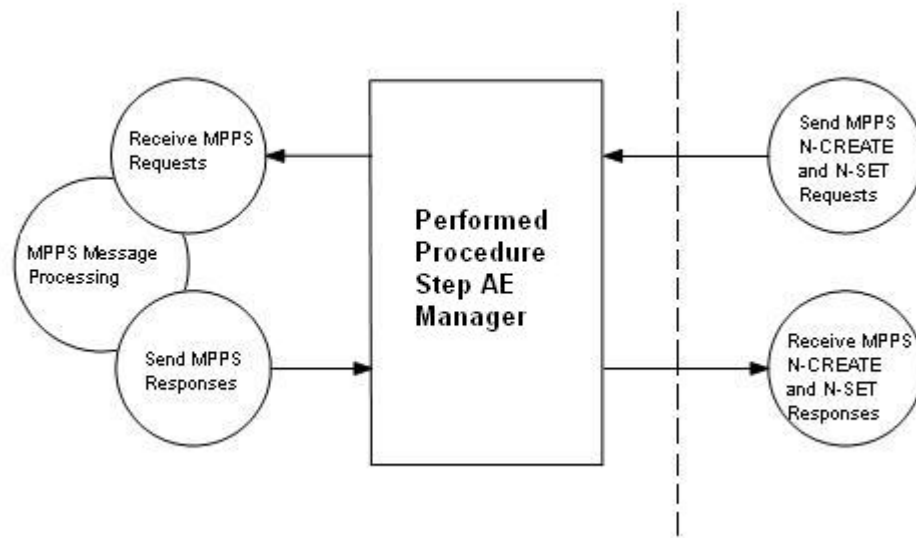


Figure 2-1.5: PicomEnterprise Performed Procedure Step AE Manager Implementation Model

2.2 *Functional definition of Application Entities*

This implementation provides for simple transfer of images via the DICOM Storage Service Class as a Service Class User (SCU) and a Service Class Provider (SCP).

The NdStoreSCU Application Entity acts as a Service Class User (SCU) of Store service class. The NdStoreSCP acts as a Service Class Provider (SCP) of Verification and Store service classes.

The NdPrintSCU Application Entity acts as a Service Class User (SCU) for the Print Service Class.

The NdWorklistSCP Application Entity acts as a Service Class Provider for the Modality Worklist Service Class.

The NdQueryRetrieveSCP Application entity acts as a Service Class Provider for the Query Retrieve Service Class.

The NdStoreCommitSCP Application Entity acts as a Service Class Provider for the Storage Commitment Service Class.

2.3 *Sequencing of Real World Activities*

All Real World Activities specified in Figure 2-1 may occur independently from each other, except that the two local Print Real World Activities are mutually exclusive. A request for the printer status is not done when a request for the image printing is busy and vice versa.

3 AE Specifications

The Network capabilities of the PicomEnterprise DICOM Application Entities are specified in the section 3.1 and the Media capabilities are specified in section 3.2.

3.1 Storage AE Network Specification

The PicomEnterprise Application Entities provide Standard Conformance to the DICOM V3.0 SOP classes as specified in Table 3-1. The following remarks are important:

- The list of available SOP Classes of the full list in Table 3-1 can be configured per PicomEnterprise system at installation time. The SOP Classes to be used can be configured per remote station. See also section 6.2.
- In case the remote system does not support the import of a specific Image Storage SOP Class, PicomEnterprise can convert (if configured to do so) these objects to a suitable format.
- The Private SOP Classes may be stored in image archives but are to be used in PicomEnterprise systems only. See also section 5.

Table 3-1: Supported SOP Classes by the NdStoreSCU AE

SOP Class Name	Role	SOP Class UID
Verification	SCP	1.2.840.10008.1.1
Basic Study Content Notification (retired Class)	SCP	1.2.840.10008.1.9
Storage Commitment Push Model	SCP, SCU	1.2.840.10008.1.20.1
Hardcopy Color Image Storage (retired Class)	SCP, SCU	1.2.840.10008.5.1.1.30
Computed Radiography Image Storage	SCP, SCU	1.2.840.10008.5.1.4.1.1.1
Digital X-Ray Image Storage – for presentation	SCP, SCU	1.2.840.10008.5.1.4.1.1.1.1
Digital X-RAY Image Storage – for processing	SCP, SCU	1.2.840.10008.5.1.4.1.1.1.1.1
Digital Mammography Image Storage – for presentation	SCP, SCU	1.2.840.10008.5.1.4.1.1.1.2
Digital Mammography Image Storage – for processing	SCP, SCU	1.2.840.10008.5.1.4.1.1.1.2.1
Digital Intra-oral X-Ray Image Storage – for presentation	SCP, SCU	1.2.840.10008.5.1.4.1.1.1.3
Digital Intra-oral X-Ray Image Storage – for processing	SCP, SCU	1.2.840.10008.5.1.4.1.1.1.3.1
CT Image Storage	SCP, SCU	1.2.840.10008.5.1.4.1.1.2

Table 3-1 (continued): Supported SOP Classes by the NdStoreSCU AE

SOP Class Name	Role	SOP Class UID
Ultrasound Multi-frame Image Storage	SCP, SCU	1.2.840.10008.5.1.4.1.1.3.1
MR Image Storage	SCP, SCU	1.2.840.10008.5.1.4.1.1.4
Ultrasound Image Storage (retired Class)	SCP, SCU	1.2.840.10008.5.1.4.1.1.6
Ultrasound Image Storage	SCP, SCU	1.2.840.10008.5.1.4.1.1.6.1
Secondary Image Capture Storage	SCP, SCU	1.2.840.10008.5.1.4.1.1.7
Multi-frame Single Bit Secondary Capture	SCP, SCU	1.2.840.10008.5.1.4.1.1.7.1
Multi-frame Grayscale Byte Secondary Capture	SCP, SCU	1.2.840.10008.5.1.4.1.1.7.2
Multi-frame Grayscale Word Secondary Capture	SCP, SCU	1.2.840.10008.5.1.4.1.1.7.3
Multi-frame True Color Secondary Capture	SCP, SCU	1.2.840.10008.5.1.4.1.1.7.4
Standard Overlay Image Storage (retired Class)		1.2.840.10008.5.1.4.1.1.8
Standalone Curve Storage (retired Class)	SCP, SCU	1.2.840.10008.5.1.4.1.1.9
12-lead ECG Waveform Storage	SCP, SCU	1.2.840.10008.5.1.4.1.1.9.1.1
General ECG Waveform Storage	SCP, SCU	1.2.840.10008.5.1.4.1.1.9.1.2
Ambulatory ECG Waveform Storage	SCP, SCU	1.2.840.10008.5.1.4.1.1.9.1.3
Hemodynamic Waveform Storage	SCP, SCU	1.2.840.10008.5.1.4.1.1.9.2.1
Cardiac Electrophysiology Waveform Storage	SCP, SCU	1.2.840.10008.5.1.4.1.1.9.3.1
Basic Audio Waveform Storage	SCP, SCU	1.2.840.10008.5.1.4.1.1.9.4.1
Grayscale Softcopy Presentation State	SCP, SCU	1.2.840.10008.5.1.4.1.1.11.1
X-Ray Angiographic Image Storage	SCP, SCU	1.2.840.10008.5.1.4.1.1.12.1
X-Ray Radiofluoroscopic Image Storage	SCP, SCU	1.2.840.10008.5.1.4.1.1.12.2
Breast Tomosynthesis	SCP, SCU	1.2.840.10008.5.1.4.1.1.13.1.3
Nuclear Medicine Image Storage	SCP, SCU	1.2.840.10008.5.1.4.1.1.20
Raw Data Storage	SCP, SCU	1.2.840.10008.5.1.4.1.1.66

DICOM Conformance for the PicomEnterprise 3.3

Table 3-1 (continued): Supported SOP Classes by the NdStoreSCU AE

SOP Class Name	Role	SOP Class UID
VL Endoscopic Image Storage	SCP, SCU	1.2.840.10008.5.1.4.1.1.77.1.1
Video Endoscopic Image Storage	SCP	1.2.840.10008.5.1.4.1.1.77.1.1.1
VL Microscopic Image Storage	SCP, SCU	1.2.840.10008.5.1.4.1.1.77.1.2
VL Slide-Coordinates Microscopic Image Storage	SCP, SCU	1.2.840.10008.5.1.4.1.1.77.1.3
VL Photographic Image Storage	SCP, SCU	1.2.840.10008.5.1.4.1.1.77.1.4
VL Whole Slide Microscopy Image Storage	SCP, SCU	1.2.840.10008.5.1.4.1.1.77.1.6
Basic Text Structured Report Storage	SCP, SCU	1.2.840.10008.5.1.4.1.1.88.11
Enhanced Structured Report Storage	SCP, SCU	1.2.840.10008.5.1.4.1.1.88.22
Comprehensive Structured Report Storage	SCP, SCU	1.2.840.10008.5.1.4.1.1.88.33
Mammography CAD SR	SCP	1.2.840.10008.5.1.4.1.1.88.50
Key Object Selection Document	SCP, SCU	1.2.840.10008.5.1.4.1.1.88.59
Encapsulated PDF Storage	SCP, SCU	1.2.840.10008.5.1.4.1.1.104.1
Positron Emission Tomography Image Storage	SCP, SCU	1.2.840.10008.5.1.4.1.1.128
RT Image Storage	SCP, SCU	1.2.840.10008.5.1.4.1.1.481.1
Patient Root Q/R Information Model – FIND	SCP, SCU	1.2.840.10008.5.1.4.1.2.1.1
Patient Root Q/R Information Model – MOVE	SCP, SCU	1.2.840.10008.5.1.4.1.2.1.2
Study Root Q/R Information Model – FIND	SCP, SCU	1.2.840.10008.5.1.4.1.2.2.1
Study Root Q/R Information Model – MOVE	SCP, SCU	1.2.840.10008.5.1.4.1.2.2.2
Patient/Study Only Q/R Information Model – FIND (retired Class)	SCP, SCU	1.2.840.10008.5.1.4.1.2.3.1
Patient/Study Only Q/R Information Model – MOVE (retired Class)	SCP, SCU	1.2.840.10008.5.1.4.1.2.3.2
Modality Worklist Information Model – FIND	SCP	1.2.840.10008.5.1.4.31

3.1.1 Association Establishment Policies

3.1.1.1 General

PicomEnterprise SCU will offer unrestricted max PDU size on Associations initiated by PicomEnterprise itself. This is also configurable per remote station, PicomEnterprise as SCP will offer the same PDU size as offered on Associations initiated by remote applications (SCU), this is not configurable, and will then use that same value as its own PDU size.

3.1.1.2 Asynchronous Nature

The number of simultaneous Associations supported by PicomEnterprise as a Service Class Provider is in principle not limited. The practical maximum number of supported Associations is determined by the amount of resources (CPU, memory, hard disk size).

As a result of local activities, PicomEnterprise will initiate at most 3 simultaneous Associations. One Association is used to issue store requests. The other Association is used to issue retrieve and one for print requests.

PicomEnterprise does not support asynchronous operations (over a single Association) and will not perform asynchronous window negotiation.

3.1.1.3 Implementation Identifying Information

The Implementation Class UID ID: 1.3.39.19600601.2.3

The Implementation version name is: NetraDICOM V2.0

3.1.2 Association Initiation Policy

PicomEnterprise initiates Associations as a result of the following events:

- The PicomEnterprise operator sends selected images from the PicomEnterprise database to another database.
- A remote application sends selected images from a remote database to the PicomEnterprise database.
- The PicomEnterprise operator requests to print selected images in the PicomEnterprise database.

3.1.2.1 Send Images from PicomEnterprise

3.1.2.1.1 Associated Real World Activity

The PicomEnterprise can send images pertaining to a selected study in a patient folder from the local PicomEnterprise to another database by means of the DICOM Store tool. PicomEnterprise initiates for each selected study an Association to the selected peer entity and uses it to send C-STORE requests (and receive the associated store replies). The Association is released when all selected images in the folder have been transmitted. PicomEnterprise handles operator send requests one after another.

3.1.2.1.2 Proposed Presentation Contexts

PicomEnterprise will propose the following presentation contexts:

Table 3-2 Proposed Presentation Contexts for PicomEnterprise to Other

Presentation Context Table					
Abstract Syntax		Transfer Syntax		Role	Ext. Neg.
Name	UID	Name List	UID List		
See Note	See Note	ILE	1.2.840.10008.1.2	SCP, SCU	None
See Note	See Note	ELE	1.2.840.10008.1.2.1	SCP, SCU	None
See Note	See Note	JPEG Baseline (Process 1)	1.2.840.10008.1.2.4.50	SCP, SCU	None
See Note	See Note	JPEG Lossless, Non-Hierarchical, First Order Prediction	1.2.840.10008.1.2.4.70	SCP, SCU	None
See Note	See Note	JPEG 2000 (Lossless only)	1.2.840.10008.1.2.4.90	SCP	None
See Note	See Note	JPEG 2000	1.2.840.10008.1.2.4.91	SCP	None
See Note	See Note	RLE Lossless	1.2.840.10008.1.2.5	SCP, SCU	None

3.1.2.1.3 C-STORE SCU Conformance

Options:

Extended negotiation is not supported.

Status display and error handling:

The store response status is recorded in the application logs.

PicomEnterprise will stop transferring of the images and release the Association if it receives an unsuccessful or warning store response after three retries. Unsuccessful transfers are placed in a queue and are retried on a FIFO basis for a configurable period of time in the range 1-hour to 6-months.

Generation of new images:

Some PicomEnterprise applications are able to generate new derived images from a set of received (original) images. An example is a 3D reconstructed image from a CT or MR image set. The attributes in these generated images are not specified in this Conformance Statement.

Important remarks about the exported images:

- The images are exported in the status "as seen" in private attributes,
- PicomEnterprise allows the operator to modify attributes of the stored images. PicomEnterprise does not modify the pixel values of the stored images. Modified images retain their original Study, Series and Image UID.
- In case the remote system does not support a modality specific Image Storage SOP Class, PicomEnterprise will convert (if configured to do so) the images and sends them via the SC Image SOP Class. These Secondary Capture images and additional information (like

graphics, text and important attribute information) are burnt-in (if configured). The original bit depth of the Secondary Capture image is kept.

- In case of color images, all color-coding schemes are sent out just like they are received. However, the image handling is based on RGB color-coding.
- Images imported into PicomEnterprise via a protocol other than DICOM and then exported via DICOM by PicomEnterprise, will conform as much as possible to the DICOM Conformance Statement of the Sclmage modality.
- Attributes Study Date and Study Time will be added to images to be exported (if not yet present). This is done because there are imaging systems relying on the existence of these attributes.
- The exported PicomEnterprise images do not contain Image Number if the original images received from modalities (possibly via a non-DICOM interface) do not contain this attribute or provide information in other attributes to PicomEnterprise to generate it.
- A number of attributes (e.g. Window Width and Window Center) are formatted as a floating-point numbers.
- For SC images only one Window Width and Window Center value is exported.
- Exported PicomEnterprise images relate Scanogram and Slice images in the following way:
- Attribute 'Referenced Image Sequence' is present in the slice images and points to the related Scanogram image.
- Note that 'Frame of Reference UID' in the Scanogram (Localizer image) and related image slices are not guaranteed to be equal; this depends on the source of the images.
- The user can add Reference Scanogram/Planscan to slices in the UI of the images that do not have a reference, These will be saved/exported as Reference Image Sequence.

Use of optimal, private and retired attributes:

The transmitted Storage SOP instances may include all optional elements specified in the DICOM standard, depending on the source of the images.

The transmitted Storage SOP instances may contain Retired and Private data elements, depending on the source of the images and of the PicomEnterprise configuration.

- A private group with group number 7FE1 can be available to store non-standard pixel data behind the 7FE0 group, which contains the standard pixel data.

3.1.2.2 Verification Application Level Communication

3.1.2.2.1 Associated Real World Activity

PicomEnterprise accepts Associations from systems that wish to verify application level communication using the C-ECHO command.

3.1.2.2.2 Presentation Context Table

Abstract Syntax		Transfer Syntax		Role	Ext. Neg.
SOP Class Name	SOP Class UID	Name	UID		
Verification	1.2.840.10008.1.1	Implicit VR Little Endian	1.2.840.10008.1.2	SCP	None

3.1.2.2.3 C-ECHO SCP Conformance

PicomEnterprise provides standard conformance.

3.1.2.2.4 Presentation Context Acceptance Criterion

PicomEnterprise accepts all contexts in the intersection of the proposed and acceptable Presentation Contexts. This means that PicomEnterprise accepts multiple proposed Presentation Contexts with the same SOP Class but different transfer Syntaxes.

3.1.2.2.5 Transfer Syntax Selection Policies

Any of the presentation contexts shown in Table 3-2 are acceptable.

3.1.2.3 Store Images in the PicomEnterprise Database

3.1.2.3.1 Associated Real World Activity

PicomEnterprise accepts Associations from systems that wish to store images in the PicomEnterprise database using the C-STORE command.

3.1.2.3.2 Presentation Context Table

See Table 3-2 for acceptable values.

3.1.2.3.3 C-STORE SCP Conformance

PicomEnterprise provides level 2 (Full) conformance for the Store Service Class. In the event of a successful C-STORE operation, the object is stored into the PicomEnterprise database. The duration of storage and further distribution is determined by the way the PicomEnterprise system is configured.

If the PicomEnterprise receives improper DICOM objects, it tries as much as possible (if configured to do so) to fix the tags to conform to DICOM standard. However, the PicomEnterprise tries to change objects as little as possible to provide a transparent storage mechanism.

Error Handling:

The C-STORE is unsuccessful if PicomEnterprise returns one of the following codes:

- A700 – Indicates the database is full. Recovery from this condition is left to the Service Class User.
- A900 – Indicates that the SOP class of the image does not match the abstract syntax negotiated for the present context.
- C000 – Indicates that the image cannot be parsed.

Processing of imported images and interoperability:

- PicomEnterprise allows the operator to modify attributes of the stored images. PicomEnterprise does not modify the pixel values of the stored images. Modified images retain their original Study, Series and Image UID.
- The DICOM standard does not guarantee that the advanced PicomEnterprise applications can process the received images. This depends on the presence and consistency of a set of attributes in these images.

3.1.2.3.4 Presentation Context Acceptance Criterion

See section 3.1.3.

3.1.2.3.5 Transfer Syntax Selection Policies

Any of the Presentation Contexts shown in Table 3-2 are acceptable.

3.1.2.4 Send Modality Worklist Information from PicomEnterprise Database

3.1.2.4.1 Associated Real World Activity

PicomEnterprise accepts associations from remote systems that wish to retrieve Worklist information (patient and study information) from the PicomEnterprise database using the C-FIND command.

3.1.2.4.2 Presentation Context Table

Abstract Syntax		Transfer Syntax		Role	Ext. Neg.
Name	UID	Name	UID		
Modality Worklist Information Model – FIND	1.2.840.10008.5.1.4.31	Implicit VR Little Endian	1.2.840.10008.1.2	SCP	None

3.1.2.4.3 C-FIND SCP Conformance

The NdWorklist SCP provides Standard conformance to the DICOM Basic Modality Worklist Management Service Class as an SCP.

The attributes that are returned by the NdWorklist SCP to the remote application SCU are configurable. The SCP can decide the attributes to be returned to a particular remote application based on its AE Title. The NdWorklist SCP also limits the number of records returned to 500.

The NdWorklist SCP accepts matching from the Worklist SCU on the following key attributes:

- Scheduled Procedure Step Start Date (0040, 0002).
- The NSWorklist SCP supports the following date query formats:
- Today: Scheduled Procedure Step Start Date (0040, 0002) set to YYYYMMDD, where this date is the current date.
- Days before today and days after today: Scheduled Procedure Step Start Date (0040, 0002) is set to YYYYMMDD-YYYYMMDD, where this date represents the specified number of days before today and/or after today.
- All Days: Scheduled Procedure Step Start Date (0040, 0002) set to zero-length representing universal matching.
- Scheduled Procedure Step Start Time (0040, 0003)
- Patient Last Name (0010, 0010)
- Patient First Name (0010, 0010)
- Patient ID (0010, 0020)
- Accession Number (0008, 0050)

DICOM Conformance for the PicomEnterprise 3.3

The keys returned by NdWorklist SCP are listed in Table below

Table 3-3 C-FIND tags returned by PicomEnterprise

Module	Attribute Name	Tag	Notes
Scheduled Procedure Step	Scheduled Procedure Step Sequence	(0040, 0100)	
	>Scheduled Station AE Title	(0040, 0001)	
	> Scheduled Station Name	(0040, 0010)	
	> Scheduled Procedure Step Location	(0040, 0011)	
	>Scheduled Procedure Step Start Date	(0040, 0002)	
	> Scheduled Procedure Step Start Time	(0040, 0003)	
	> Scheduled Procedure Step End Date	(0040, 0004)	
	> Scheduled Procedure Step End Time	(0040, 0005)	
	>Scheduled Performing Physician's Name	(0040, 0006)	
	>Scheduled Procedure Step Description	(0040, 0007)	
	>Scheduled Protocol Sequence	(0040, 0008)	
	>> Code Value	(0008, 0100)	
	>> Coding Scheme Designator	(0008, 0102)	
	>> Coding Scheme Version	(0008, 0103)	
	>> Code Meaning	(0008, 0104)	
	>> Protocol Context Sequence	(0040, 0440)	
	> Scheduled Procedure Step ID	(0040, 0009)	
	> Scheduled Procedure Step Status	(0040, 0020)	
	> Comments on the Scheduled Procedure Step	(0040, 0400)	
	> Modality	(0008, 0060)	
> Requested Contrast Agent	(0032, 1070)		
Pre-medication	(0040, 0012)		
Requested Procedure	Requested Procedure ID	(0040, 1001)	
	Reason for Requested Procedure	(0040, 1002)	
	Requested Procedure Comments	(0040, 1400)	
	Requested Procedure Code Sequence	(0032, 1064)	
	> Code Value	(0008, 0100)	
	> Coding Scheme Designator	(0008, 0102)	
	> Coding Scheme Version	(0008, 0103)	
	> Code Meaning	(0008, 0104)	
	Study Instance UID	(0020, 000D)	
	Requested Procedure Description	(0032, 1060)	
	Requested Procedure Priority	(0040, 1003)	
Requested Procedure Location	(0040, 1005)		
Imaging Service Request	Reason for the Imaging Service Request	(0040, 2001)	
	Imaging Service Request Comments	(0040, 2400)	
	Requesting Physician	(0032, 1032)	
	Referring Physician's Name	(0008, 0090)	
	Accession Number	(0008, 0052)	

Module	Attribute Name	Tag	Notes
Visit Identification	Institution Name	(0008, 0080)	
	Admission ID	(0038, 0010)	
	Issuer of Admission ID	(0038, 0011)	
Patient Identification	Patient's Name	(0010, 0010)	
	Patient ID	(0010, 0020)	
	Issuer of Patient ID	(0010, 0021)	
	Other Patient IDs	(0010, 1000)	
	Other Patient Names	(0010, 1001)	
	Patient's Birth Name	(0010, 1005)	
	Patient's Mother's Birth Name	(0010, 1005)	
Patient Demographic	Patient's Age	(0010, 1010)	
	Occupation	(0010, 2180)	
	Patient's Birth Date	(0010, 0030)	
	Patient's Birth Time	(0010, 0032)	
	Patient's Sex	(0010, 0040)	
	Patient's Insurance Plan Code Sequence	(0010, 0050)	
	> Code Value	(0008, 0100)	
	> Code Scheme Designator	(0008, 0102)	
	> Code Scheme Version	(0008, 0103)	
	> Code Meaning	(0008, 0104)	
	Patient's Size	(0010, 1020)	
	Patient's Weight	(0010, 1030)	
	Patient Address	(0010, 1040)	
	Patient's Country of Residence	(0010, 2150)	
	Patient's Telephone Numbers	(0020, 2154)	
	Patient Comments	(0010, 4000)	
Patient Medical	Ethnic Group	(0010, 2160)	
	Medical Alerts	(0010, 2000)	
	Contrast Allergies	(0010, 2110)	
	Additional Patient History	(0010, 21B0)	
	Pregnancy Status	(0010, 21C0)	
	Special Needs	(0038, 0050)	
	Patient State	(0038, 0500)	

3.1.2.4.4 Presentation Context Acceptance Criterion

No Criterion.

3.1.2.4.5 Transfer Syntax Selection Policies

Only the Implicit VR Little Endian transfer syntax is supported. Any proposed presentation context that does not include the Implicit VR Little Endian transfer syntax will be rejected.

3.1.2.5 Query/Retrieve from PicomEnterprise Database

3.1.2.5.1 Associated Real World Activity

PicomEnterprise accepts associations from remote systems that wish to retrieve images from the PicomEnterprise database using the C-MOVE request. A C-MOVE response message will be generated synchronously with the associated C-STORE.

This AE accepts associations for the Image Storage Class using any defined IOD class. It accepts associations for the Query/Retrieve (Q/R) SOP using the Patient Root, Study Root, and Patient/Study Only Query Model.

3.1.2.5.2 Presentation Context Table

Table 3-4 Proposed Presentation Contexts for PicomEnterprise Query/Retrieve

Abstract Syntax		Transfer Syntax		Role	Ext. Neg.
SOP Class Name	SOP Class UID	Name	UID		
Patient Root Q/R Information Model – FIND	1.2.840.10008.5.1.4.1.2.1.1	Implicit VR Little Endian	1.2.840.10008.1.2	SCP, SCU	None
Patient Root Q/R Information Model – MOVE	1.2.840.10008.5.1.4.1.2.1.2	Implicit VR Little Endian	1.2.840.10008.1.2	SCP, SCU	None
Study Root Q/R Information Model – FIND	1.2.840.10008.5.1.4.1.2.2.1	Implicit VR Little Endian	1.2.840.10008.1.2	SCP, SCU	None
Study Root Q/R Information Model – MOVE	1.2.840.10008.5.1.4.1.2.2.2	Implicit VR Little Endian	1.2.840.10008.1.2	SCP, SCU	None
Patient Study Only Q/R Information Model – FIND	1.2.840.10008.5.1.4.1.2.3.1	Implicit VR Little Endian	1.2.840.10008.1.2	SCP, SCU	None
Patient Study Only Q/R Information Model – MOVE	1.2.840.10008.5.1.4.1.2.3.2	Implicit VR Little Endian	1.2.840.10008.1.2	SCP, SCU	None

In addition, the PicomEnterprise Query/Retrieve also supports the following types of attribute matching:

- Single Value Matching
- Universal Matching
- Wild Card Matching
- Range Matching
- List of UID Matching

3.1.2.5.3 C-FIND SCP Conformance

The C-FIND response status values are supported as defined in DICOM c 3.0 Part 4.

All Required (R) and Unique (U) Study, Series, and Image level keys for the Patient Root Study Root Query Retrieve Information Model are supported.

3.1.2.5.4 C-MOVE SCP Conformance

There is no prioritization of C-FIND and C-MOVE requests. All are set to normal – 0.

All images requested in a single C-MOVE will be sent over a single association (the association will not be established and torn down for each image)

3.1.2.5.5 Presentation Context Acceptance Criterion

No Criterion.

3.1.2.5.6 Transfer Syntax Selection Policies

Only the Implicit VR Little Endian transfer syntax is supported. Any proposed presentation context that does not include the Implicit VR Little Endian transfer syntax will be rejected.

3.1.2.5.7 Implementation Remarks

The PicomEnterprise Query/Retrieve tool supports Patient Root and Study Root Information models. The following tables list the information model attributes supported.

3.1.2.5.7.1 Patient Root Query/Retrieve Information Model

Table 3-5 Patient Level Keys for Patient Root Query/Retrieve Information Model

Attribute Name	Element Tag	Type	Notes
Patient Name	(0010,0010)	Required	
Patient ID	(0010,0020)	Unique	
Patient Birth Date	(0010,0030)	Optional	
Patient Sex	(0010,0040)	Optional	
Other Patient IDs	(0010,1000)	Optional	
Other Patient Names	(0010,1001)	Optional	
Ethnic Group	(0010,2160)	Optional	
Patient Comments	(0010,4000)	Optional	

Table 3-6 Study Level Keys for Patient Root Query/Retrieve Information Model

Attribute Name	Element Tag	Type	Notes
Study Date	(0008,0020)	Required	
Study Time	(0008,0030)	Required	
Accession Number	(0008,0050)	Optional	
Study ID	(0020,0010)	Required	
Study Instance UID	(0020,000D)	Unique	
Study Description	(0008,1030)	Optional	
Modalities in Study	(0008,0061)	Optional	
Referring Physician	(0009,0090)	Optional	
Study Description	(0008,1030)	Optional	
Patients Age	(0010,1010)	Optional	
Patients Weight	(0010,1030)	Optional	
Study Modality	(0008,0061)	Optional	
Station Name	(0008,1010)	Optional	
Department Name	(0008,1040)	Optional	
Admitting Diagnosis Description	(0008,1080)	Optional	
Patient's Age	(0010,1010)	Optional	
Patient's Size	(0010,1020)	Optional	
Patient's Weight	(0010,1030)	Optional	
Additional Patient History	(0010,21B0)	Optional	

3.1.2.5.7.2 Study Root Query/Retrieve Information Model

Table 3-7 Study Level Keys for Study Root Query/Retrieve Information Model

Attribute Name	Element Tag	Type	Notes
Patient Name	(0010,0010)	Optional	
Patient ID	(0010,0020)	Optional	
Study Instance UID	(0020,000D)	Unique	
Study Date	(0008,0020)	Required	
Study Time	(0008,0030)	Required	
Study Number	(0020,0010)	Required	(Official: Study ID)
Study Description	(0008,1030)	Optional	
Accession Number	(0008,0050)	Optional	
Referring Physician	(0009,0090)	Optional	
Patients Age	(0010,1010)	Optional	
Patients Weight	(0010,1030)	Optional	
Study Modality	(0008,0061)	Optional	
Station Name	(0008,1010)	Optional	
Department Name	(0008,1040)	Optional	

3.1.2.5.7.3 Basic Text SR and Enhanced SR C-FIND Supported Attributes

Table 3-8 Basic Text SR and Enhance SR C-Find Supported Attributes

Attribute Name	Element Tag	Type	Notes
SR Instance Specific Level			
Completion Flag	(0040, A491)		
Verification Flag	(0040, A493)		
Content Date	(0008, 0023)		
Content Time	(0008, 0033)		
Observation Date Time	(0040, A032)		
Verifying Observer Sequence	(0040, A032)		
>Verifying Organization	(0040, A027)		
>Verification Observer Name	(0040, A075)		
>Verifying Observer Identification Code	(0040, A088)		
Referenced Request Sequence	(0040, A370)		
>Study Instance UID	(0020, 000D)		
>Accession Number	(0008, 0050)		
>Requested Procedure ID	(0040, 1000)		
>Requested Procedure Code Sequence	(0032, 1064)		
>>Code Value	(0008, 0100)		
>>Code Scheme Designator	(0008, 0102)		
>>Code Scheme Version	(0008, 0103)		
>>Code Meaning	(0008, 0104)		
Concept Name Code Sequence	(0008, 0102)		
>Code Value	(0008, 0100)		
>Code Scheme Designator	(0008, 0102)		
>Code Scheme Version	(0008, 0103)		
>Code Meaning	(0008, 0104)		

3.1.2.5.7.4 Grayscale Soft Copy Presentation State C-FIND Supported Attributes

Table 3-9 Grayscale Soft Copy Presentation State C-Find Supported Attributes

Attribute Name	Element Tag	Type	Notes
GSPS Instance Specific Level			
Presentation Label	(0070, 0080)		
Presentation Description	(0070, 0081)		
Presentation Creation Date	(0070, 0082)		
Presentation Creation Time	(0070, 0083)		
Presentation Creator's Name	(0070, 0084)		
Referenced Series Sequence	(0008, 1115)		
>Series Instance UID	(0020, 000E)		
>Referenced Image Sequence	(0008, 1140)		
>> Referenced SOP Class UID	(0008, 1150)		
>> Referenced SOP Instance UID	(0008, 1155)		

3.1.2.6 Response to Storage Commitment Request

3.1.2.6.1 Associated Real World Activity

The associated real world activity is the receipt of a Storage Commitment request from a remote application entity. When PicomEnterprise receives a storage commitment request (N-ACTION) it will immediately respond with a status of success. It will then try to locate all objects (SOP instances) for which storage commitment was requested. Once the objects are located, it will establish an association back to the requesting entity and will send a storage commitment response (N-EVENT-REPORT). The association will be closed after completion of the N-EVENT-REPORT.

3.1.2.6.2 Presentation Context Table

Abstract Syntax		Transfer Syntax		Role	Ext. Neg,
SOP Class Name	SOP Class UID	Name	UID		
Storage Commitment Push Model	1.2.840.10008.1.20.1	Implicit VR Little Endian	1.2.840.10008.1.2	SCP	None

3.1.2.6.3 SOP Specific Conformance for Storage Commitment Push SOP Class

The PicomEnterprise Storage Commitment tool conforms fully to the SOP of the Storage Commitment Push Service Class. No extended negotiation is supported.

If PicomEnterprise returns one of the following status codes for N-ACTION, then the request for storage commitment was unsuccessful.

0119 (Class-instance conflict) – Indicates that the SOP instance UID sent in the N-ACTION-RQ did not match the Storage Commitment Push Model SOP Instance UID (1.2.840.10008.1.20.1.1)

0110 (Processing Failure) – Indicates that an unknown error occurred during the storage commitment.

3.1.2.6.4 Presentation Context Acceptance Criterion

No Criterion.

3.1.2.6.5 Transfer Syntax Selection Policies

Only the Implicit VR Little Endian transfer syntax is supported. Any proposed presentation context that does not include the Implicit VR Little Endian transfer syntax will be rejected.

3.1.2.7 Send Storage Commitment Request to a Remote System

3.1.2.7.1 Associated Real World Activity

The associated real world activity is the transmission of a Storage Commitment request (N-ACTION) to a remote application entity. When PicomEnterprise receives a storage commitment response (N-EVENT-REPORT), the confirmed studies will be marked in the database as archived.

3.1.2.7.2 Presentation Context Table

Abstract Syntax		Transfer Syntax		Role	Ext. Neg,
SOP Class Name	SOP Class UID	Name	UID		
Storage Commitment Push Model	1.2.840.10008.1.20.1	Implicit VR Little Endian	1.2.840.10008.1.2	SCU	None

3.1.2.7.3 SOP Specific Conformance for Storage Commitment Push SOP Class

The PicomEnterprise Storage Commitment tool conforms fully to the SOP of the Storage Commitment Push Service Class. No extended negotiation is supported.

3.1.2.7.4 Presentation Context Acceptance Criterion

No Criterion.

3.1.2.7.5 Transfer Syntax Selection Policies

Only the Implicit VR Little Endian transfer syntax is supported. Any proposed presentation context that does not include the Implicit VR Little Endian transfer syntax will be rejected.

3.1.2.8 Send Basic Study Content Notification to a Remote System

3.1.2.8.1 Associated Real World Activity

The PicomEnterprise system accepts associations from nodes which want it to be notified about studies that have been performed by other application entities. The application entity performing a study content notification sends a C-STORE request to the PicomEnterprise system. The C-STORE request specifies the content of a study that has been performed. The PicomEnterprise system checks all series and images it is notified about and sends the C-STORE response message containing one of the following status values: complete study content exists, partial study content exists or none of the study content exists on the system supporting the PicomEnterprise system.

3.1.2.8.2 Proposed Presentation Contexts

Abstract Syntax		Transfer Syntax		Role	Ext. Neg.
SOP Class Name	SOP Class UID	Name	UID		
Basic Study Content Notification	1.2.840.10008.1.9	Implicit VR Little Endian	1.2.840.10008.1.2	SCP	None

3.1.2.8.3 SOP Specific Conformance

The PicomEnterprise system does not try to retrieve images, series or studies which don't exist on its system.

3.1.2.8.4 Presentation Context Acceptance Criterion

No Criterion.

3.1.2.8.5 Transfer Syntax Selection Policies

Only the Implicit VR Little Endian transfer syntax is supported. Any proposed presentation context that does not include the Implicit VR Little Endian transfer syntax will be rejected.

3.1.2.9 Print Images

3.1.2.9.1 Associated Real World Activity

The operator can select one or more images from the initial database (via the Data Handling Facility) and perform a print operation on them. The operator will select the print destination from a list of configured printers and some print parameters (depending on the configuration and the selected printer).

As a result, PicomEnterprise will initiate an association to the selected printer and uses it to send the Print Service Elements of the Print SOP Classes.

3.1.2.9.2 Proposed Presentation Contexts

PicomEnterprise will propose the presentation contexts as given in Table 3-2.

3.1.2.9.3 Conformance to the Print SOP Classes

PicomEnterprise provides standard conformance to the Basic Grayscale Print Management Meta SOP Class.

The application order of Print Service Elements (DIMSE's) is specified in Table 3-10. A description and the applied optional (i.e. non-mandatory attributes as Print SCU) attributes in these Services Elements are specified too. Note that the Service elements order is not specified by the DICOM standard.

PicomEnterprise does not do an explicit N-DELETE Request on the created instances; these are deleted implicitly when releasing the association.

Overlay, Annotation (showing the values of some major identifying attributes) and Shutter Information is processed in the images sent to the printer (i.e. burnt-in image).

The full list of (Mandatory and Optional) attributes applied in these Service Elements is given in section 8.

Table 3-10: The applied order of Print Service Elements and its optional attributes

Service Element of SOP Class	Note
N-GNET of the Printer SOP Class	Purpose is to retrieve printer information
N-CREATE of the Basic Film Session SOP Class	PicomEnterprise specifies the DICOM Printer about some general presentation parameters, applicable for all films in the Film Session. Applied optional attributes are: Number of Copies, Print Priority, Medium Type, Film Destination
N-CREATE of the Basic Film Box SOP Class	PicomEnterprise specifies the DICOM Printer about some general presentation parameters, applicable for all images in the Film Box. Applied optional attributes are: Film Orientation, Film Size ID, Magnification Type, Max. Density, Configuration Information, Trim
N-SET of the Basis Grayscale/Color Image Box SOP Class	PicomEnterprise will send images to be printed. Applied optional attributes are: Polarity
N-ACTION of the Basic Film Box SOP Class	PicomEnterprise triggers the DICOM Printer to print, this actual print action is done at film box level. No (optional) attributes are present.

The table below specifies the supported Service Elements, which may be generated by the Printer at any time during the association.

Table 3-11: The applied sequence of Print Service Elements and its optional attributes

Service Element of SOP Class	Note
N-EVENT-REPORT of the Printer SOP Class	May be sent at any moment by the Printer SCP (i.e. DICOM Printer). PicomEnterprise will ignore the contents of these events. However, the printer status is polled via a separate association, see section 3.1.2.5

The Status Codes of DIMSE Responses (Success, Warning, Failure) as returned by the printer will also be logged (for service purposes) and are mapped onto general print job status messages towards the operator.

The user Interface message indicates:

- "Job Completed" and has the meaning that the print job is accepted by the printer; the actual printing will be done afterwards.
- "General Print Error" indicating that a failure occurred during the DICOM Print. Also, most warning cases (like default printer values applied optimal print attributes) are interpreted as a

print error because this will mostly result in a different print quality or print layout than expected.

The following implementation remarks are important to achieve successful printing:

- PicomEnterprise will release the association when the print command is given (i.e. the N-ACTION Requests); the association is not kept open for receiving N-EVENT-REPORTs of the Printer SOP Class.
- On status-errors/warnings in a DIMSE response, the data transfer will be stopped and film will not be printed.

3.1.3 Association Acceptance Policy

PicomEnterprise accepts Associations for the following purposes:

- To allow remote applications to verify application level communication with PicomEnterprise.
- To allow remote applications to store images in the PicomEnterprise database (i.e. image import).

The PicomEnterprise Application Entity (if configured to do so) rejects Association requests from unknown applications, i.e., applications that offer an unknown "calling AE title". An application is known if and only if it is defined during configuration of the PicomEnterprise system.

Any of the presentation contexts shown in Table 3-2 are acceptable.

3.2 *Performed Procedure Step Manager Specification*

3.2.1 Association Establishment Policies

3.2.1.1 General

The Performed Procedure Step Manager functions as a standalone application entity. The Performed Procedure Step N-CREATE message is sent automatically after the acquisition protocol has been selected, and before the acquisition is begun. There is no operator intervention required.

The Performed Procedure Step N-SET message is sent immediately after the acquisition has completed. If the operator aborted the acquisition, a DISCONTINUED status is sent, and no intervention by the operator is needed. In all other cases, the status that is sent is COMPLETED.

The PPS manager immediately and reliably distributes PPS information from the Acquisition Modality Actor or Image Creator Actor to both the Image Manager and the Department System Scheduler/Order Filler. If transmission to one or both destinations fails, the PPS manager tries to repeat the transmission periodically until it succeeds or until a specified time limit for transmission is exceeded. The PPS Manager's reliable delivery service has configurable parameters, including maximum number of attempted re-transmissions and delay between re-transmissions.

3.2.1.2 Number of Associations

The PPS Manager will attempt one association establishment per N-Set or N-Create message received to the remote configured destination. The PPS Manager will accept any number of simultaneous associations, the number of which can be configured.

3.2.1.3 Asynchronous Nature

There is no asynchronous activity in this implementation.

3.2.1.4 Implementation Identifying Information

The Implementation Class UID ID: 1.3.39.19600601.2.2

The Implementation version name is: NetraDICOM V2.0

3.2.2 Association Initiation Policy

The Performed Procedure Step software attempts to initiate an association once each time it is invoked.

3.2.2.1.1 Forwarding MPPS Messages

3.2.2.1.2 Associated Real-World Activity

The Performed Procedure Step software attempts to initiate an association once each time it is invoked. There is only one Real World Activity that can cause association establishment: initiating and completing an acquisition. To prevent a potential infinite redistribution of PPS messages, the PPS Manager provides a configuration mechanism that can enable and disable the Performed Procedure Step Manager component.

The MPPS SCP can optionally forward all received N-SET and N-CREATE messages to a second MPPS SCP. The MPPS DICOM service then appears as an MPPS SCU.

All received N-CREATE and N-SET messages are forwarded as they were received. The message is forwarded using the same presentation context negotiated when the originating modality performed the association with the MPPS SCP.

3.2.2.1.3 Proposed Presentation Contexts

The PPS Manager will propose the following Transfer Syntaxes for each presentation context in an association it initiates:

Abstract Syntax		Transfer Syntax		Role	Ext. Neg.
SOP Class Name	SOP Class UID	Name	UID		
Modality Performed Procedure Step	1.2.840.10008.3.1.2.3.3	Implicit VR Little Endian	1.2.840.10008.1.2	SCP, SCU	None

Table 3-2: Supported SOP Classes by the Performed Procedure Step Manager

3.2.3 Association Acceptance Policy

When the PPS Manager accepts an association, it will allow the storage MPPS messages and the verification of the Application Entity.

The PPS Manager is configurable to allow security restrictions ranging from promiscuous to limiting a particular remote application entity to specified SOP classes and specified SCU/SCP roles. If security is turned on, association attempts by unknown entities will be rejected outright and proposed presentation contexts from known remote application entities may be rejected.

3.2.3.1 Respond to a Verification Request from a Remote System

3.2.3.1.1 Associated Real-World Activity

The Performed Procedure will respond with a status of successful if it receives a verification request.

3.2.3.1.2 Presentation Context Table

The PPS Manager will accept the following Transfer Syntaxes for each presentation context in an association it receives:

Abstract Syntax		Transfer Syntax		Role	Ext. Neg.
SOP Class Name	SOP Class UID	Name	UID		
Verification	1.2.840.10008.1.1	Implicit VR Little Endian	1.2.840.10008.1.2	SCP	None

3.2.3.1.3 SOP Specific Conformance for Verification SOP Class

The PPS Manager conforms to the SOP of the Verification Service Class fully. The Performed Procedure Step software does not attempt any extended negotiation. If the PPS Manager returns anything other than success, then the C-ECHO operation failed.

3.2.3.2 Receiving MPPS Messages

3.2.3.2.1 Associated Real-World Activity

The PPS manager receives an N-Create or N-Set operation; it will process it accordingly and respond with a status of Success to the MPPS SCU. The received message will then be forwarded reliably to the remote configured MPPS SCP. For this operation the PPS manager is serving the role of the MPPS SCU.

3.2.3.2.2 Presentation Context Table

The PPS Manager will accept the following Transfer Syntaxes for each presentation context in an association it receives:

Abstract Syntax		Transfer Syntax		Role	Ext. Neg.
SOP Class Name	SOP Class UID	Name	UID		
Modality Performed Procedure Step	1.2.840.10008.3.1.2.3.3	Implicit VR Little Endian	1.2.840.10008.1.2	SCP, SCU	None

3.2.3.2.3 SOP Specific Conformance Statement for MPPS

The PPS Manager provides standard conformance to the DICOM Modality Performed Procedure Step SOP Class as an SCP.

3.2.3.2.4 Presentation Context Acceptance Criterion

No Criterion.

3.2.3.2.5 Transfer Syntax Selection Policies

The PPS Manager only supports the Implicit VR Little Endian transfer syntax. Any proposed presentation context that does not include the Implicit VR Little Endian transfer syntax will be rejected.

3.3 Media Storage AE Specification

The NdStoreMedia AE provides Standard Conformance to the DICOM Media Storage Service and File Format (PS 3.10) and the Media Storage Application Profiles (PS 3.11) as far as reading of uncompressed images on DICOM Storage Media is concerned.

3.3.1 File Meta Information

The (Source) Application Entity Title is specified in section 3.2.1.4. The Implementation Class UID and the Implementation Version Name in the File Meta Header is specified in section 3.2.1.4.

3.3.2 Media Related Real World Activities

3.3.2.1 RWA Display Directory

The NdStoreMedia AE will act as a FSR when reading the directory of the medium. This will result in an overview of the patients, studies, series and images on the PicomEnterprise screen.

Implementation restriction:

- PicomEnterprise is not guaranteed to display the directory listing of DICOM Storage media on which the data is pressed by the disk producer (like is the case with software CD's).

3.3.2.1.1 *Application Profile(s) for this RWA*

See Table 3-1.

3.3.2.1.2 *Required and Optional DICOMDIR Keys*

The Mandatory DICOMDIR Keys are required for the correct display of Directory Information. The display is structured according to the DICOM Composite Information Model: Patient. Possibly present optional DICOMDIR Keys are not displayed.

3.3.2.2 *RWA Write Images to DICOM Storage Media*

The NdStoreMedia AE will act as a FSC when writing all/selected images in a patient folder onto the DICOM Storage media. Note that the images are written in ELE (by default), so are compressed, as specified in the STD-GEN-CD Application Profile. Other Presentation contexts are configurable.

3.3.2.2.1 *Application Profile(s) for this RWA*

See Table 3-1.

3.3.2.2.2 *RWA Write Images to DICOM Storage media*

The same remarks as section 3.1.2.1 about the existence of Optional, Retired and Private attributes are applicable. The DICOMDIR file will be extended when new images are written. In case some attributes are not present in the images but are specified Mandatory in the DICOMDIR definition in the DICOM Media, a dummy ID will be filled in.

Implementation Remarks:

When writing the DICOMDIR records, the key's values are generated when no value of the corresponding attribute is supplied:

- PATIENT_ID
 - STUDY_ID
 - STUDY_INSTANCE_UID
 - SERIES_NUMBER
 - SERIES_INSTANCE_UID
 - IMAGE_NUMBER
 - SOP_INSTANCE_UID
- The mechanism of generating a value for PATIENT_ID creates each time a new value based on PATIENT_NAME for each new study for the DICOM Storage media, even if the study belongs to a patient recorded earlier.
 - The default value for the Pixel Intensity Relationship (0028, 1040) is set to DISP.
 - A number of attributes (e.g. Window Width and Window Center) can be formatted as floating point numbers.

3.3.2.3 RWA Read Images from DICOM Storage media

The PicomEnterprise AE will act as a FSR when reading all/selected images from the DICOM Storage media.

Implementation remarks and restrictions:

- PicomEnterprise is also able to read images coded in all of the JPEG codes as specified in Table 3-2, "Proposed Presentation Contexts for PicomEnterprise to Other".
- For the CD-Medical medium only the standard XA STILL file is being read, the non-standard XA MOVIE files are not accessible.

3.3.2.3.1 Application Profile(s) for this RWA

See Table 3-1.

3.3.2.3.2 Support for attributes in images

The Mandatory attribute of the DICOM images is required for the correct storage of the images in the PicomEnterprise internal image database. Optional Attributes and Retired/Private Attributes are stored too if present; this is equivalent with the level 2 (Full) conformance for the Storage Service Class in the Network support, see section 3.1.2.1.

The same remarks as in section 3.1.2.1 about that storage of multi-frame/Bi-plane images and about requirements to process read images via the dedicated PicomEnterprise application functions, are applicable.

3.3.3 Augmented Application Profile

PicomEnterprise supports all transfer syntaxes as mentioned in Table 3-2.

Instances of the Private SOP Classes (see Table 3-1) may be written on the DICOM Storage media.

4 Communication Profiles

4.1 *Supported Communication Stacks*

The PicomEnterprise application provides DICOM V3.0 TCP/IP Network Communication Support as defined in Part 8 of the DICOM standard.

4.2 *TCP/IP Stack*

PicomEnterprise inherits its TCP/IP stack from the IBM compatible system upon which it executes.

4.2.1 Physical Media Support

Ethernet ISO 8802-3. Standard AUI, optional twisted pair 10-BaseT.

5 Extensions/Specializations/Privatizations

The standard DICOM SOP Classes may be extended with additional attributes:

- Standard attributes of the SOP Classes; the presence of these attributes in exported images can be configured, see section 6.2.
- Retired (from ACR NEMA 1.0 or 2.0) attributes; the presence of these attributes in exported images can be configured, see section 6.2.
- Private attributes; the presence of these attributes in exported images can be configured, see section 6.2.

There are no Specialized SOP Classes.

6 Configuration

The PicomEnterprise system is configured by means of a configuration program. This program is accessible at the startup of the PicomEnterprise system. It is intended to be used by Sclmage Customer Support Engineers only. This program prompts the Customer Support Engineer to enter configuration information needed for the PicomEnterprise application.

6.1 *AE Title/Presentation Address mapping*

6.1.1 Local AE Titles and Presentation Addresses

The PicomEnterprise AE title is default equal to the IP host name. This host name can be changed by the Customer Support Engineer at installation.

6.1.2 Remote AE Titles and Presentation Addresses

All relevant remote applications able to setup a DICOM Association towards PicomEnterprise must be configured at PicomEnterprise configuration time. The Customer Support Engineer must provide the following information for each application:

- The Application Entity Title
- The SOP classes and Transfer Syntaxes for which PicomEnterprise accepts Associations.
- All relevant remote applications able to accept DICOM Associations from PicomEnterprise must be configured at PicomEnterprise configuration time. The Customer Support Engineer must provide the following information for each remote application:
 - The Application Entity Title
 - The host name/IP address on which the remote application resides.
 - The port number at which the remote application accepts Association requests.

6.2 *Configurable parameters*

6.2.1 Configurable per PicomEnterprise system

The following items are configurable per PicomEnterprise installation:

- The SOP classes (out of the full list of SOP Classes in Table 3-1 and Table 3-2) and the Transfer Syntaxes (out of the full list in Presentation Context Tables in this statement) to be used.
- The maximum PDU size for associations initiated by PicomEnterprise (default is 0 meaning unlimited PDU size).

6.2.2 Configuration per remote system

The following items are configurable per remote system:

- The SOP classes and Transfer Syntaxes for which PicomEnterprise sets-up and accepts associations.
- Automatic conversion of images of SOP classes not supported by remote systems into SC Image Storage SOP instances.
- The maximum PDU size for Associations initiated by PicomEnterprise.
- Export of 'pure' DICOM images (i.e. only the standard DICOM attributes defined in the related IOD) or 'rich' DICOM images (with additional Standard DICOM, Private and Retired attributes).

6.2.3 Print Configuration

Configurable per PicomEnterprise installation:

- The DICOM printers to be selected by the operator.

The following print parameters are configurable per DICOM printer type (see also the Print Management overview if the supported attributes in section 8):

- The Medium Type
- Film Size ID (i.e. Media Size)
- Film Orientation
- Image Display Format
- Film Size in X and Y direction (this influences the Rows and Columns in the Image Box instances).
- Configuration Information (configurable per print destination). This is a character string containing implementation specific print parameters.
- Magnification Type.
- Trim.
- Film Destination.
- Max. Density.

These print parameters can be selected from choice lists. These choice lists are defined via so-called protocols for each type of printer and print medium. These prototypes are also configurable.

7 Support of Extended Character Sets

PicomEnterprise supports Extended Character Set "ISO_IR 100" which is the Latin alphabet No 1, supplementary set. Overview of the applied Print Management Service Elements

7.1 Basic Film Session SOP Class

Table 8-1: Basic Film Session SOP Class – N-CREATE

Attribute Name	Tag	Note
Number of Copies	2000,0010	Between 1 and 99
Print Priority	2000,0020	Applied value(s): MED, HIGH
Medium Type	2000,0030	Applied value(s): BLUE FILM, CLEAR FILM, PAPER
Film Destination	2000,0040	Applied value(s): MAGAZINE, PROCESSOR

7.2 Basic Film Box SOP

Table 8-2; Basic Film Box SOP Class – N-CREATE

Attribute Name	Tag	Note
Image Display Format	2010,0010	The applied value is below a PicomEnterprise specific value indicating that one (large) image is contained in a Film Box. Applied value(s): CUSTOM\1, STANDARD\1,1 (1 is a vendor specific index, i.e. an integer) is applied in the Standard Image Display Format does not result in acceptable films. Purpose of this value is to use the film surface as much as possible for image printing (and avoid large margins). This should be agreed per printer vendor.
Film Orientation	2010,0040	Applied value(s): LANDSCAPE, PORTRAIT
Film Size ID	2010,0050	DICOM specifies a number of Defined Terms; more values are possible and are print configuration dependent.
Magnification Type	2010,0060	Normally sent out, however sometimes sent out empty because some DICOM printers and not able to handle (value NONE for) this attribute. Applied value(s): NONE
Trim	2010,0140	
Configuration Information	2010,0150	Contains a vendor specific Lookup Table (LUT); should be applied by the DICOM printer if LUT data is present.

Table 8-3: Basic Film Session SOP Class – Basic Film Box Relationship Module

Attribute Name	Tag	Note
Referenced Film Session Sequence	2010,0500	Parent Film Session
>Reference SOP Class UID	0008,1150	
>Referenced SOP Instance UID	0008,1155	

Table 8-4: Basic Film Session SOP Class – N-ACTION

Attribute Name	Tag	Note
No attributes present		

7.3 Basic Grayscale Image Box SOP class

Table 8-5: Basic Grayscale Image SOP Class – N-SET

Attribute Name	Tag	Note
Image Position	2020,0010	Applied value(s): 1
Polarity	2020,0020	Applied value(s): NORMAL
Preformatted Grayscale Image Sequence	2020,0110	
>Samples per Pixel	0028,0002	Applied value(s): 1
>Photometric Interpretation	0028,0004	Applied value(s): MONOCHROME2
>Rows	0028,0010	Depending on the selected printer type and film size
>Columns	0028,0011	Depending on the selected printer type and film size
>Bits Allocated	0028,0100	Applied value(s): 16,8
>Bits Stored	0028,0101	Applied value(s): 12,8
>High Bit	0028,0102	Applied value(s): 11,7
>Pixel Representation	0028,0103	Applied value(s): 0x0000
>Pixel Data UID	7FE0,0010	

7.4 Color Grayscale Image Box SOP Class

Table 8-6: Basic Color Image Box SOP Class – Image Box Pixel Presentation Module

Attribute Name	Tag	Note
Image Position	2020,0010	Applied value(s): 1
Polarity	2020,0020	Applied value(s): NORMAL
Preformatted Grayscale Image Sequence	2020,0111	
>Samples per Pixel	0028,0002	Applied value(s): 3
>Photometric Interpretation	0028,0004	Applied value(s): RGB
>Planar Interpretation	0028,0006	Applied value(s): 0000,0001 0000, is not interleaved, 0001, frame interleaved

DICOM Conformance for the PicomEnterprise 3.3

>Rows	0028,0010	
>Columns	0028,0011	Depending on the selected printer type and film size
>Bits Allocated	0028,0100	Applied value(s): 8
>Bits Stored	0028,0101	Applied value(s): 8
>High Bit	0028,0102	Applied value(s): 7
>Pixel Representation	0028,0103	Applied value(s): 0x0000
>Pixel Data UID	7FE0,0010	

Table 8-7: Printer SOP Class – N-GET

Attribute Name	Tag	Note
Printer Status	2110.0010	
Printer Status Info	2110,0020	

Table 8-8: Printer SOP Class – N-EVENT-REPORT

Attribute Name	Tag	Note
Printer Status Info	2110,0020	Conditionally sent by the Printer. PicomEnterprise will ignore the status information. However, polling this status via the N-GET Service Element is done.

The Service Element is sent by the printer and interpreted by PicomEnterprise.

The PicomEnterprise does not send an attribute to the printer, therefore the only attributes which are needed to be supported by the printer, are the mandatory attributes listed in Table 8-7, "Printer SOP Class – N-GET".